



Improving access, care and treatment in hospital for people with learning disabilities

Johanna Lee Clinical Lead Nurse LD. NHS Knowsley.

Tracy Reed Health Facilitator NHS Sefton

Rachel Mayner Health Facilitator Merseycare NHS Trust

NHS Trust Learning Disability Services

➤ Who are we?

– **Strategic /Clinical Health Facilitators: LD Nurses**

- Address health inequalities.
- Improve access to health care services.
- Improve health outcomes.

➤ We work in partnership with Community Learning Disability Team:

- RLD Nurses.
- Care Managers (social workers).
- Consultant Psychiatrist.
- Therapists

➤ Roles and Responsibilities of Team:

- Clinical & therapeutic.
- Health facilitation.
- Health promotion.
- Training.
- Care management.



Working across Acute Trusts in Merseyside



- Aintree University Hospital
 - Walton Centre



- Whiston Hospital



- Southport & Ormskirk

- Liverpool Children's Hospital



Royal Liverpool & Broadgreen

– Heart & Chest Hospital

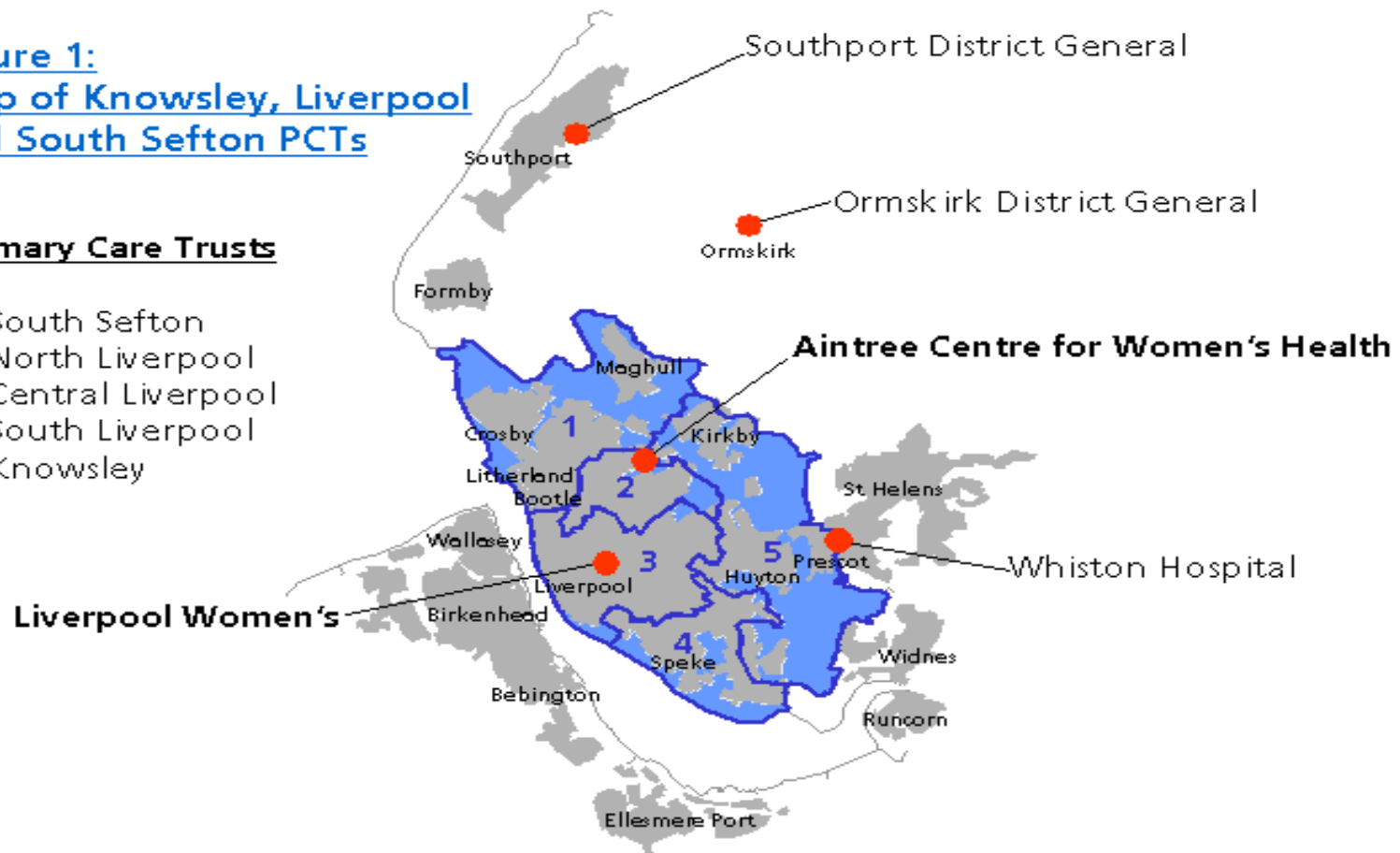


Local Approach to a National Agenda

Figure 1:
Map of Knowsley, Liverpool
and South Sefton PCTs

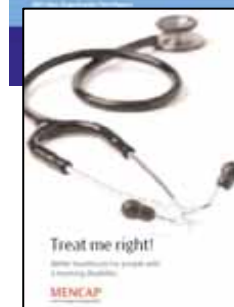
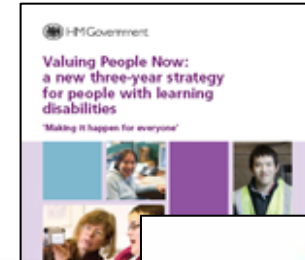
Primary Care Trusts

- 1 South Sefton
- 2 North Liverpool
- 3 Central Liverpool
- 4 South Liverpool
- 5 Knowsley

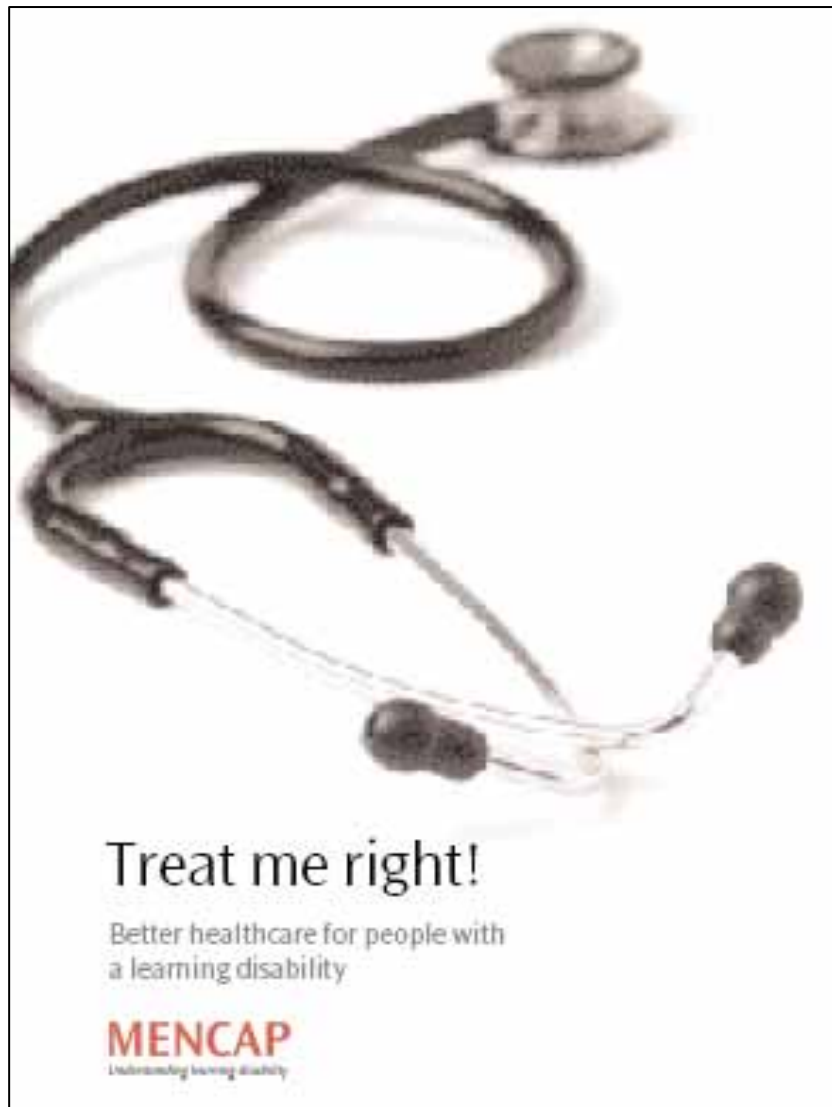


Research and evidence

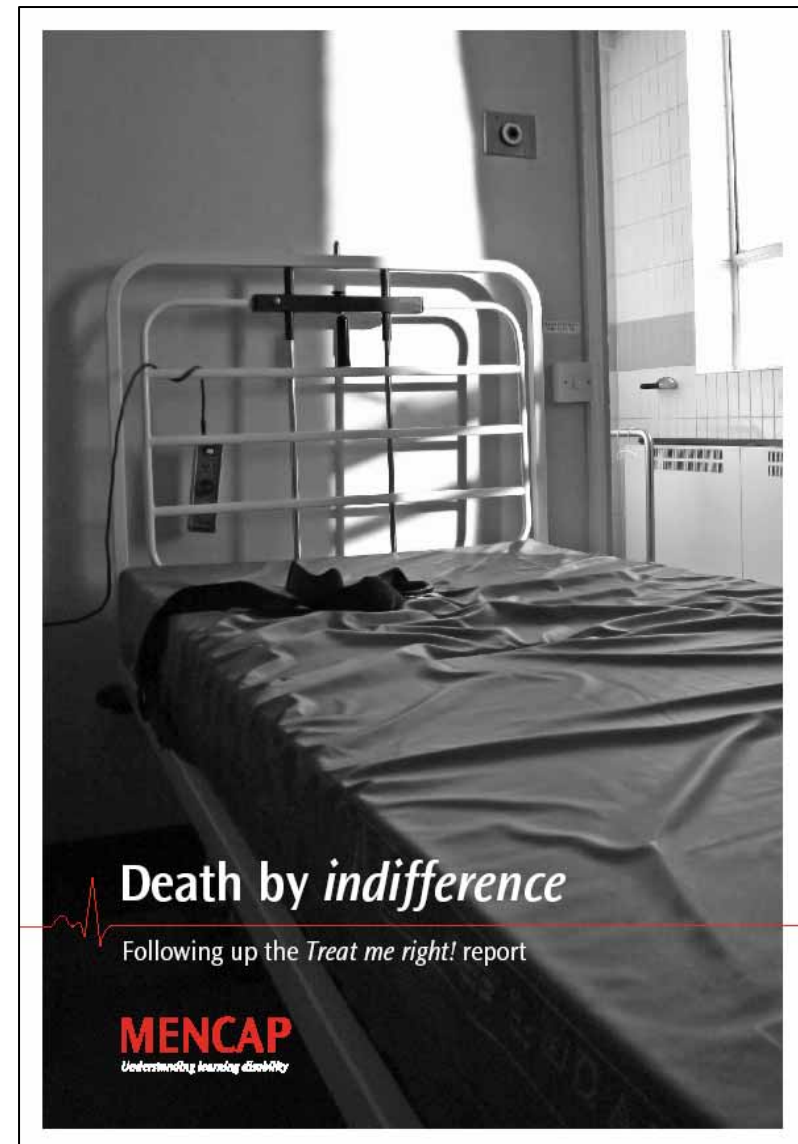
- Valuing People Now: DOH: Dec 2008/ 2009
- NHS Review: Lord Darzi July 2008
- Sir Jonathon Michael Report :DOH 2008
- Death by Indifference: Mencap 2008
- Equal Treatment: Closing the Gap: DOH: March 2007
- Disability Rights Commission Formal Investigation Report: DRC: 2004, 2006
- Treat me right report: Mencap 2004
- Choosing Health: making healthier choices easier: DOH:2004
- Fair Access to Care Services: DOH 2003
- Valuing People: DOH:2001



Treat me right! Mencap: 2004

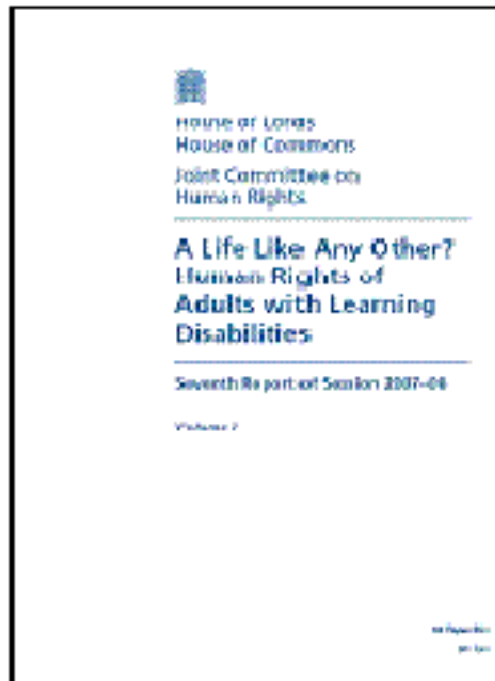


Death by indifference: Mencap 2008:





Response to 'Death by indifference'



What have we done so far
in Merseyside?

LD pathway / steering /working group



- Commitment & Partnership working

- Working Group: -
 - Terms of reference
 - Action plan
 - Policy



- LD awareness session / education / training

- Resources:

- LD Resource file
- Best practice guidance for staff
- Communication Book
- Patient 'Health Passport
- Flyer: LD service contact details
- Links with local LD teams



- Patient & Carer Involvement:

- Listen & Learn event
- Patient survey
- Training & awareness sessions

LD Working Group: Work in Progress



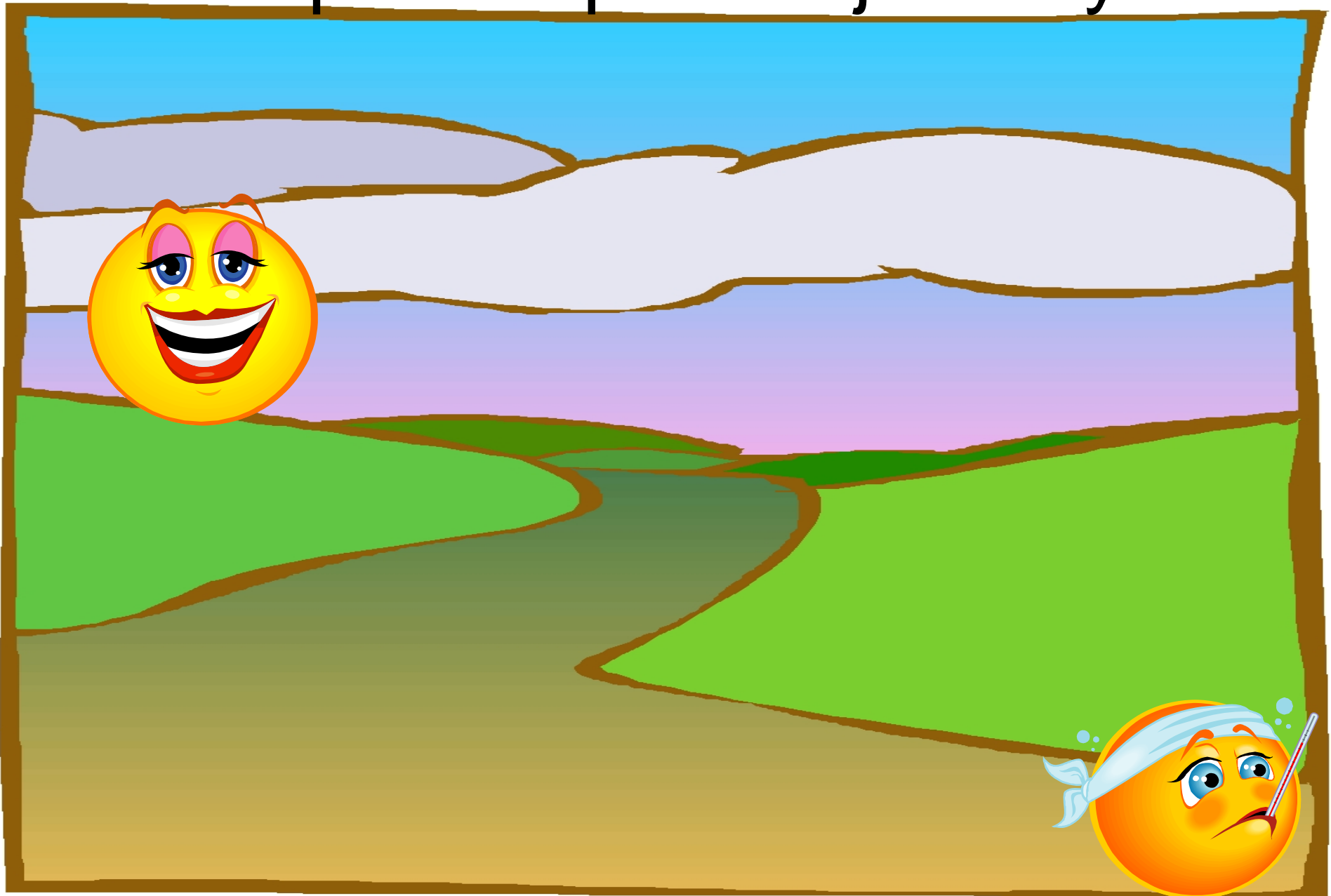
- Alder Hey Children's hospital:
 - Complex care pathway
 - Aim : improve transition from child to adult health services
 - Grand round
 - Links with Community LD teams
 - Key hospital clinicians to lead on the work



- Acute hospitals:
 - Commitment & Partnership working
 - Standard approach: same systems, policies and protocols
 - Proactive, person centred approach to care planning
 - Multi professional complex discharge planning
 - Link with other Acute Trusts
 - Hospital representation on LD Partnership Board Health Sub Groups
 - Improved flow of information
 - Links with LD Community Teams & Health Facilitators

•

Improved patient journey





Thank you
Any questions?